



Flat 1/1, 25 Milovaig Street
Glasgow | G23 5JA

pattison&co



Flat 1/1, 25 Milovaig Street, Glasgow, G23 5JA

This is a well presented two bedroom flat on the preferred first floor within the popular Summerston area of Glasgow. The property enters by a spacious hallway giving access to all apartments within the property. The front facing living room is bright and spacious and is complete with working fireplace. A generously sized dining room is accessed off the living room and is the perfect space for entertaining. The kitchen which can be accessed from the dining room or direct from the hallway is well sized and offers base and floor mounted units, integrated oven and extractor fan and space for white goods. Both bedrooms are generously sized doubles with space for wardrobes and other storage solutions. The bathroom features a contemporary three piece suite with neutral tones to suit any taste. The property has ample storage space throughout with a large storage cupboard off the hallway, two further smaller storage spaces also lead from the hallway and there are two further storage spaces off the dining room. The property specification includes: gas central heating, full double glazing, secure entry. Externally, the property faces on to well-maintained lawns and benefits from residents parking. The property is a 10 minute drive from Glasgow's West End and provides easy access to all usual amenities.



All room measurements are taken at the longest and widest points:-

Living Room: 3.08m x 5.00m

Dining Room: 3.21m x 2.60m

Kitchen: 2.50m x 3.30m

Hallway: 5.40m x 1.60m

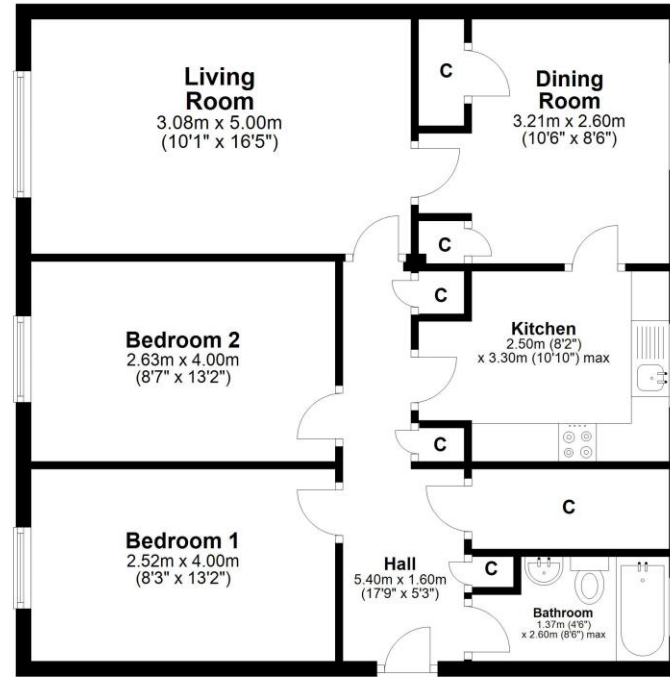
Bedroom 1: 2.63m x 4.00m

Bedroom 2: 2.52m x 4.00m

Bathroom: 1.37m x 2.60m



Milovaig Street, Glasgow G23 5JA



Total area: approx. 71.0 sq. metres (764.0 sq. feet)

IMPORTANT: we would like to inform prospective purchasers that these sales particulars have been prepared as a general guide only. A detailed survey has not been carried out, nor the services, appliances and fittings tested. Room sizes should not be relied upon for furnishing purposes and are approximate. If floor plans are included, they are for guidance only and illustration purposes only and may not be to scale. If there are any important matters likely to affect your decision to buy, please contact us before viewing the property.