



33 Dechmont Street, Parkhead, G31 4TL

pattison&co

OFFERS OVER £85,000



33 Dechmont Street, Parkhead, G31 4TL

Pattison and Company are delighted to offer this well proportioned two bedroom end terrace villa located in a quiet residential street in Parkhead. The property enters by a bright and welcoming hallway with a under stair storage space and access to downstairs WC. The lounge is bright and spacious and has a feature fireplace. The dining kitchen is to the rear of the property and hosts a good range of floor and wall mounted units along with integrated oven and gas hob. The upper landing gives access to two double bedrooms, family bathroom with shower and three good sized storage cupboards. The property further benefits from gas central heating, UPVC double glazed windows and well maintained private gardens to the front and rear.

Dechmont Street is conveniently placed for easy access to a host of amenities including a variety of day to day shops, supermarkets, recreational pursuits and Forge Retail Park and public transport services. In addition to this, there are excellent road links close by giving easy access to Glasgow City and the Central belt motorway network system.



All room measurements are taken from the longest and widest points:-

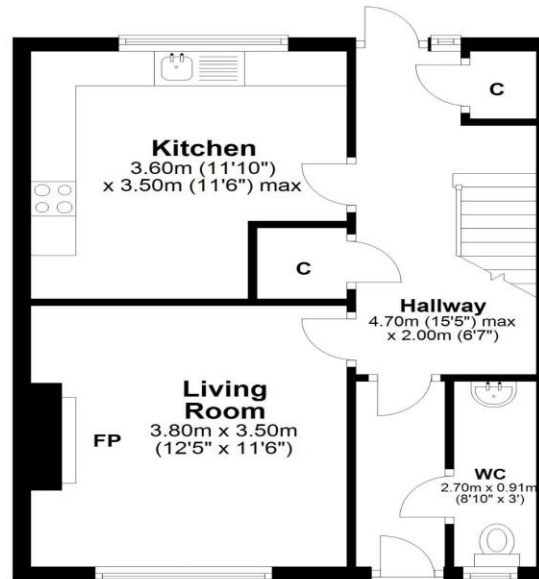
Hallway:	4.70m x 2.00m
Living Room:	3.80m x 3.50m
Kitchen:	3.60m x 3.50m
WC:	2.70m x 0.91m
Bedroom 1:	3.80m x 3.50m
Bedroom 2:	3.60m x 3.50m
Bathroom:	2.10m x 2.00m



Dechmont Street, Parkhead, G31 4TL

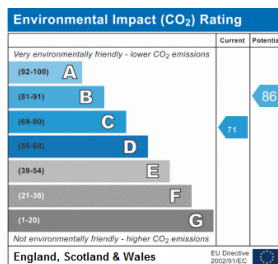
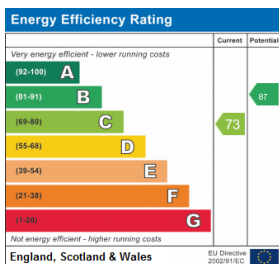
Ground Floor

Approx. 42.0 sq. metres (451.9 sq. feet)



First Floor

Approx. 42.0 sq. metres (451.9 sq. feet)



Total area: approx. 84.0 sq. metres (903.8 sq. feet)

IMPORTANT: we would like to inform prospective purchasers that these sales particulars have been prepared as a general guide only. A detailed survey has not been carried out, nor the services, appliances and fittings tested. Room sizes should not be relied upon for furnishing purposes and are approximate. If floor plans are included, they are for guidance only and illustration purposes only and may not be to scale. If there are any important matters likely to affect your decision to buy, please contact us before viewing the property.