



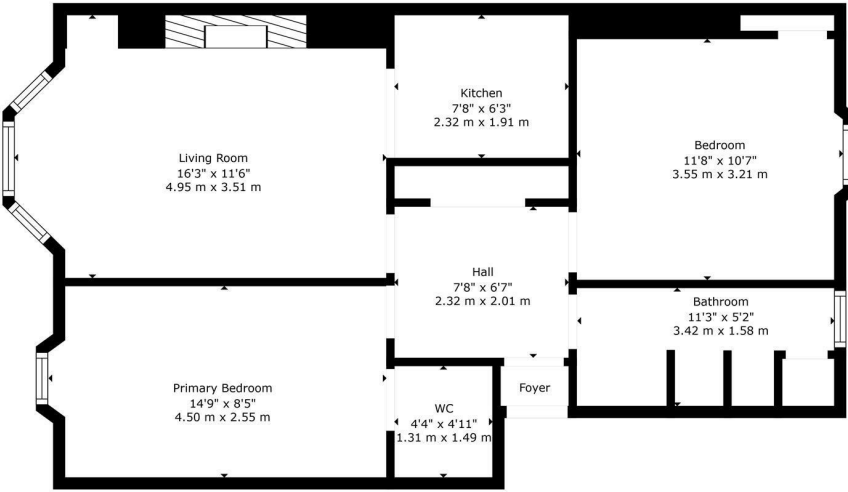
Lawrence Street | | Glasgow | G11 5HQ

Offers over £205,000

pattison&co

Lawrence Street |
Glasgow | G11 5HQ
Offers over £205,000

Nestled in the heart of Glasgow on the esteemed Lawrence Street, this charming two-bedroom flat offers a delightful blend of traditional character and modern convenience. Situated on the preferred first floor of a classic blonde sandstone tenement, the property boasts a generous living space, making it an ideal choice for first-time buyers, students, professionals, and investors alike.



TOTAL: 651 sq. ft, 60 m2
FLOOR 1: 651 sq. ft, 60 m2
WALLS: 54 sq. ft, 6 m2

Floorplan Created By Procapture Media. Measurements Deemed Highly Reliable But Not Guaranteed.

Energy Efficiency Rating		
	Current	Potential
Very energy efficient - lower running costs		
(92 plus) A		
(81-91) B		
(69-80) C		
(55-68) D		
(39-54) E		
(21-38) F		
(1-20) G		
Not energy efficient - higher running costs		
Scotland	EU Directive 2002/91/EC	

103 Byres Road
Glasgow
G11 5HW
0141 334 7706
melanie.paterson@pattisonandcompany.com
<http://www.pattisonandcompany.com>