



Mull Avenue | | Paisley | PA2 8JA

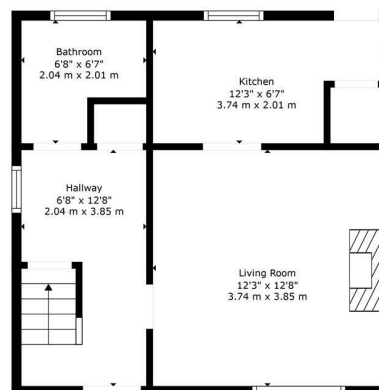
Offers over £129,000

pattison & co

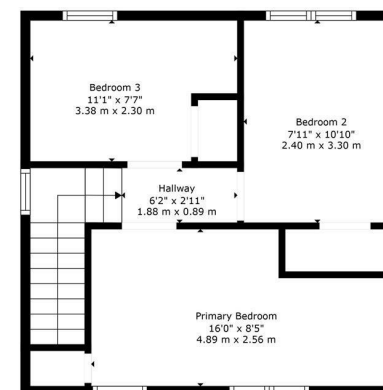
Mull Avenue |
Paisley | PA2 8JA
Offers over £129,000

****CLOSING DATE THURSDAY 2ND OCTOBER 12PM****
Nestled in the desirable Glenburn area of Paisley, this charming three-bedroom semi-detached house on Mull Avenue presents an excellent opportunity for families seeking a comfortable and inviting home. Located just south of the town centre, the property boasts a convenient position with easy access to local amenities and transport links.

- Front facing living room
- UPVC double glazed windows
- Driveway for parking
- Rear facing kitchen
- Front and rear gardens
- Semi-detached family home



Floor 1



Floor 2

pattison&co

TOTAL: 754 sq. ft, 70 m2
FLOOR 1: 377 sq. ft, 35 m2, FLOOR 2: 377 sq. ft, 35 m2
EXCLUDED AREAS: WALLS: 70 sq. ft, 6 m2
Floorplan Created By Proapture Media. Measurements Deemed Highly Reliable But Not Guaranteed.



Energy Efficiency Rating		
	Current	Potential
Very energy efficient - lower running costs		
(92 plus) A		
(81-91) B		
(69-80) C		
(55-68) D	66	75
(39-54) E		
(21-38) F		
(1-20) G		
Not energy efficient - higher running costs		
Scotland	EU Directive 2002/91/EC	

103 Byres Road
Glasgow
G11 5HW
0141 334 7706

melanie.paterson@pattisonandcompany.com
<http://www.pattisonandcompany.com>