



Priorwood Court | | Glasgow | G13 1GE

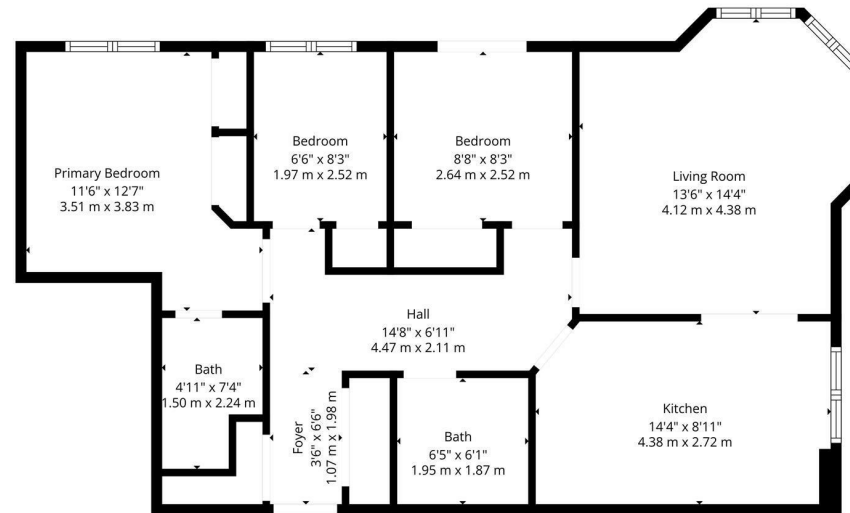
Offers over £225,000

pattison&co

Priorwood Court |
Glasgow | G13 1GE
Offers over £225,000

Nestled in the heart of Glasgow, this charming three-bedroom flat at Priorwood Court offers a delightful blend of comfort and convenience. Situated on the second floor of a classic blonde sandstone tenement block, this property boasts a spacious living room that features a lovely bay window, allowing natural light to flood the space and providing a picturesque view of the surrounding area.

- 3 spacious bedrooms
- Secure common entry
- Includes a parking space
- Corner living room with bay window
- Well-maintained residents' garden
- Close to local amenities



pattison&co

TOTAL: 804 sq. ft, 75 m2
FLOOR 1: 804 sq. ft, 75 m2
EXCLUDED AREAS: WALLS: 63 sq. ft, 6 m2

Floorplan Created By Prospace Media. Measurements Derived Highly Reliable But Not Guaranteed.

Energy Efficiency Rating		
	Current	Potential
Very energy efficient - lower running costs		
(92 plus) A		
(81-91) B		
(69-80) C		
(55-68) D		
(39-54) E		
(21-38) F		
(1-20) G		
Not energy efficient - higher running costs		
Scotland	77	83
EU Directive 2002/91/EC		

103 Byres Road
Glasgow
G11 5HW
0141 334 7706

melanie.paterson@pattisonandcompany.com
<http://www.pattisonandcompany.com>