



2/1

Dryburgh Gardens | | Glasgow | G20 6BT

Offers over £279,000

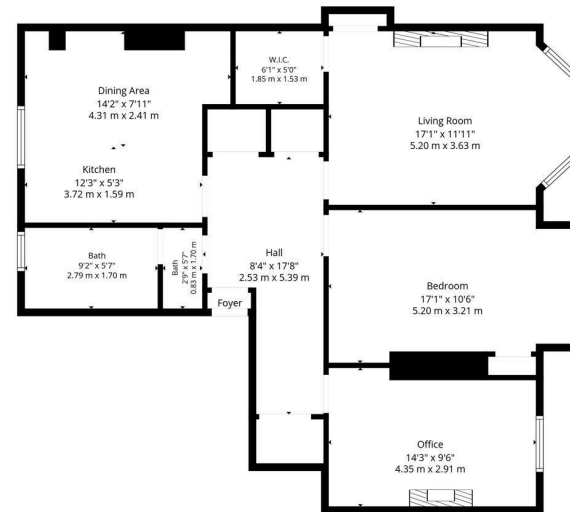
pattison&co

2/1

Dryburgh Gardens |
Glasgow | G20 6BT
Offers over £279,000

Nestled in the charming Dryburgh Gardens, this delightful second-floor flat offers a perfect blend of period elegance and modern convenience. This purpose-built red sandstone Tenement property boasts two generously sized bedrooms, making it an ideal home for couples, small families, or professionals seeking a comfortable living space in one of Glasgow's most sought-after areas.

- 2 spacious bedrooms
- Modern kitchen
- Period fireplace in lounge
- Secure communal entry
- On-street parking
- Located in Glasgow's West End
- Near schools and amenities
- Viewing recommended



Total: 966 sq. Ft. 90 m2
1st Floor: 966 sq. Ft. 90 m2
Excluded Areas: Walls: 73 sq. Ft. 6 m2
Illustrative Purposes Only. Measurements Are Deemed Highly Reliable But Not Guaranteed.

Energy Efficiency Rating		Current	Potential
<i>Very energy efficient - lower running costs</i>			
(92 plus)	A		
(81-91)	B		
(69-80)	C		
(55-68)	D	68	73
(39-54)	E		
(21-38)	F		
(1-20)	G		
<i>Not energy efficient - higher running costs</i>			
Scotland		EU Directive 2002/91/EC	

103 Byres Road
Glasgow
G11 5HW
0141 334 7706

melanie.paterson@pattisonandcompany.com
<http://www.pattisonandcompany.com>