



Roffey Park Road | | Paisley | PA1 3ET

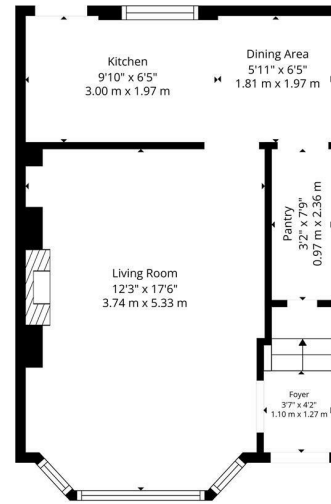
Offers over £185,000

pattison & co

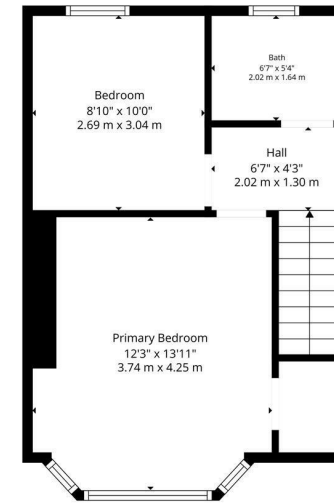
Roffey Park Road |  
Paisley | PA1 3ET  
Offers over £185,000

Nestled in the charming area of Roffey Park Road, Paisley, this delightful two-storey end-terrace house offers a perfect blend of comfort and convenience. With a well-thought-out layout, the ground floor features a spacious living room, ideal for relaxation and entertaining. The kitchen is functional and provides ample space for culinary pursuits. Ascending to the first floor, you will find two generously sized bedrooms, perfect for families or those seeking extra space. Additionally, a modern shower room with a WC enhances the practicality of this lovely home.

- Two-storey end-terrace house
- Two good-sized bedrooms
- Private front and rear garden
- Near local amenities in Paisley
- Cosy living room
- Shower room with WC
- Garage for private parking



1st Floor



2nd Floor

Total: 739 sq. Ft. 68 m2  
1st Floor: 369 sq. Ft. 34 M2, 2nd Floor: 370 sq. Ft. 34 m2  
Excluded Areas: Walls: 63 sq. Ft. 7 m2

Illustrative Purposes Only. Measurements Are Deemed Highly Reliable But Not Guaranteed.

Energy Efficiency Rating		Current	Potential
Very energy efficient - lower running costs			
(92 plus) A			
(81-91) B			
(69-80) C			
(55-68) D			
(39-54) E		53	67
(21-38) F			
(1-20) G			
Not energy efficient - higher running costs			
Scotland		EU Directive 2002/91/EC	

103 Byres Road  
Glasgow  
G11 5HW  
0141 334 7706

melanie.paterson@pattisonandcompany.com  
<http://www.pattisonandcompany.com>